

THE PRIVATE JET LIFESTYLE MAGAZINE

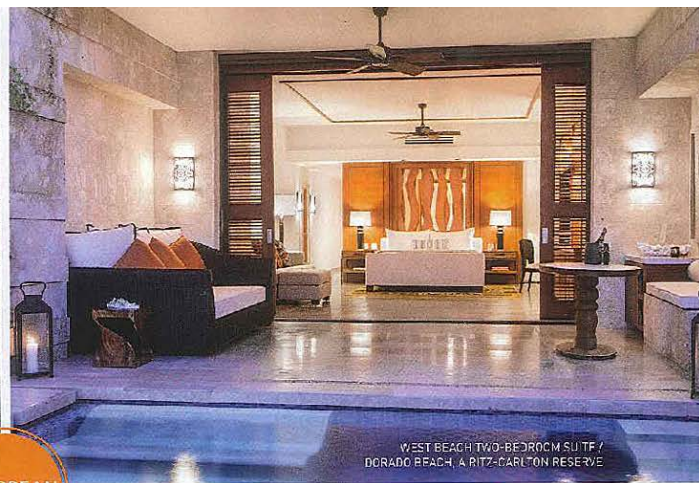
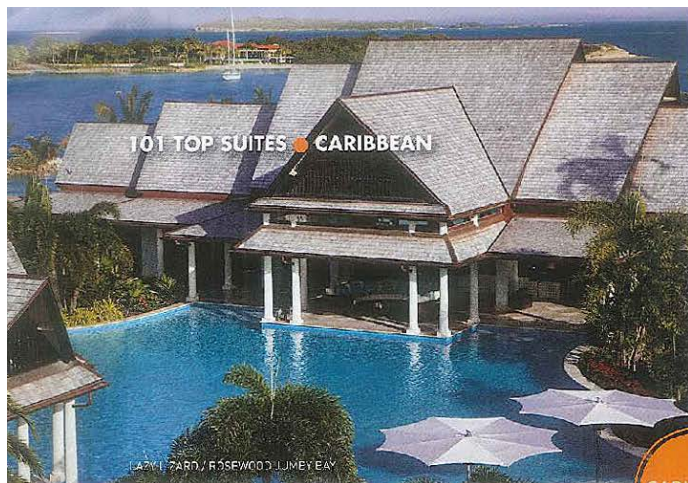
ELITE

T R A V E L E R

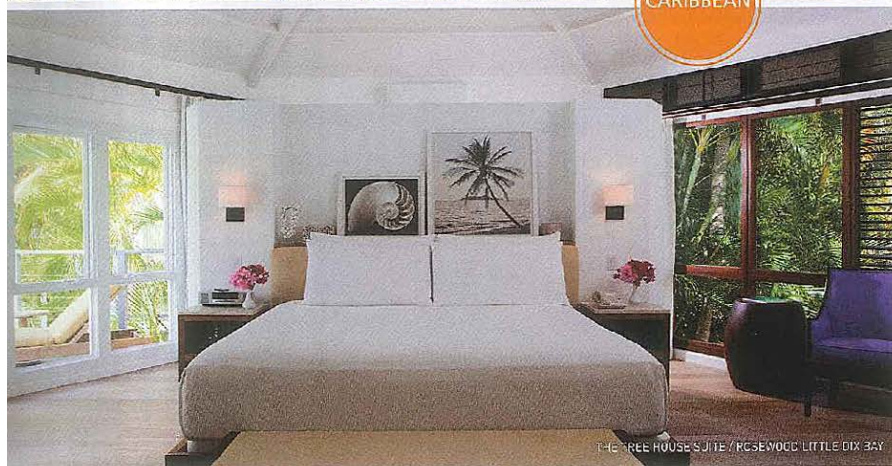
JUL/AUG
2014

THE TOP
101
SUITES
OF THE WORLD

\$50.00



CARIBBEAN



Virgin Gorda/British Virgin Islands ROSEWOOD LITTLE DIX BAY

THE TREE HOUSE SUITE

Square Footage | 940 plus 350 outdoor

Why We Love It | To mark its golden anniversary, this Caribbean hot spot is undergoing a three-year, multi-million dollar renovation, of which the first phase was just revealed and included the introduction of this brand-new suite. Formerly one of the Tree House Cottages originally built in 1964 by Laurance S. Rockefeller, the suite, as the name suggests, is nestled in the trees and has a wrap-around terrace with breathtaking, uninterrupted beach views, thanks to its elevated perch.

Rate | From \$1,395

Contact | Managing Director Edward Linsley, (284) 495-5555; edward.linsley@rosewoodhotels.com; www.rosewoodhotels.com

Dorado/Puerto Rico DORADO BEACH, A RITZ-CARLTON RESERVE

WEST BEACH TWO BEDROOM SUITE

Square Footage | 3,242

Why We Love It | This contemporary, yet pared-down second-floor suite sits right above the resort's white-sand beach and has an extensive 1,288-square-foot rooftop terrace with a private infinity plunge pool. You can slide the glass doors leading to the terrace completely open and enjoy the sound of waves lapping against the sand from the comfort of your bed.

Rate | \$3,630

Contact | General Manager George Sotelo, (787) 626-1100; george.sotelo@ritzcarlton.com; www.coradobeachreserve.com



St. John's/Antigua ROSEWOOD JUMBY BAY

LAZY LIZARD

Square Footage | 19,000 indoor and 30,000 outdoor

Why We Love It | A brand new build for this tiny private island property, the sprawling Lazy Lizard estate, which is set on five tropical acres adjacent to the Caribbean, comprises eight pavilions that marry Caribbean flair with Asian styling. Situated around a free-from swimming pool with a floating dining pavilion, the estate even has its own floodlit tennis court and personal fitness center.

Rate | \$11,500

Contact | Managing Director Andrew Hedley, (268) 467-5000; andrew.hedley@rosewoodhotels.com; www.rosewoodhotels.com

Palm Beach/Aruba THE RITZ-CARLTON, ARUBA

THE RITZ-CARLTON SUITE

Square Footage | 2,390

Why We Love It | The Ritz-Carlton, Aruba secured prime real estate at the far end of Palm Beach, and its top suite boasts equally prime Caribbean views that you can enjoy from the generously sized wraparound balcony that has sunbeds, a dining table, and a hammock. Exuding a relaxed yet refined vibe, the spacious suite is adorned with deep mahogany furnishings, vibrant tones, and tropical patterns.

Rate | \$2,700

Contact | Hotel Manager Tiffany Holmes, (297) 527-2222; tiffany.holmes@ritzcarlton.com; www.ritzcarlton.com

St. Barth's HOTEL GUANAHANI AND SPA

THE BEACH HOUSE SUITE

Square Footage | 900

Why We Love It | A wooden walkway set in the sand leads to this revamped whitewashed suite, which sits directly on the beach and has its own lushly manicured private garden and alfresco Jacuzzi overlooking the azure waters. A Creole contemporary design with vibrant hues of sunny yellow and cobalt blue dominates the interiors.

Rate | \$2,495

Contact | General Manager Martein van Wagenberg, 590-590-52-9000; mvanwagenberg@leguanahani.com